



PROTECTIVE GEAR FOR FIRST RESPONDERS



Stealth®

Premier Turnout Gear
Page 4

B2

Power-house gear that's
loaded with features
Page 8

B1

Power-house gear that's
loaded with features
Page 8

Wildland

Tough gear outfitted with
LazerMax® trim
Page 16

Dual Certified

Ergonomic Gear that
meets NFPA 1977/1951
and Wildland/Urban SAR
Page 18



COMPETITION-PROVEN PERFORMANCE

Commonly referred to as "the toughest two minutes in sports", the 3M Scott Firefighter Combat Challenge is the ultimate test of fit and functionality for turnout gear. It is also where Lakeland perfects current technology and strategizes for improvements to future turnout gear lines.

New innovations like the Easy Grip™ DRD or dynamic pleating are developed for more than just race gear. These features make their way into all levels of Lakeland turnout gear after proving their durability and quality on the Combat Challenge battlegrounds.

See the latest competition-inspired advancements to Lakeland turnout gear!



B2 Coat and Pants shown in Black Pioneer outer shell with 3M Segmented Comfort Trim



7" Black Nomex® Thumbhole Wristers

Designed to provide comfort and thermal protection to the sleeve and/or glove interface, Lakeland turnout gear incorporates 100% black Nomex® thumbhole wristers combined with black Stedprene® sleeves and Stedshield® cuff reinforcements.



Napoleon Side Pocket

Available for Lakeland Stealth turnout gear, the Napoleon side pocket is located under the storm flap. This addition provides a dry, secure area to conveniently store personal belongings to be transported during training or emergency responses.



Easy Grip™ DRD Device

Our unique Easy Grip™ DRD is directly connected to the strap to cut access time in half – even with a gloved hand. Simply peel up the Easy Grip DRD device, pull straight out, slip your hand through the rescue loop, and move to safety.



SideKik™ Knee Pads with Dynamic/Radial Pleats

Our SideKik™ knee reinforcements cover a wider area and feature a "bump-out" to the outside of the leg for extra protection when using the side of your knees to push off or feel your way through a dark environment.



Dynamic Pleated Back, Shoulders and Arms

The ergonomically shaped sleeves on Lakeland Stealth and B2 turnout gear are paired with built-in expansion gussets. These elements work with our "On the Shoulder" arm seam and pleated back to provide unparalleled reach and mobility without any sleeve retraction or coat rise.



Belt Loop Handle Grips

To further simplify donning turnout gear, Lakeland turnout pants now come equipped with handle grips. Select belt loops above the pockets have been replaced with durable fabric grips for hassle-free donning in emergent situations.



New! Lakeland Fortify Particulate Blocking System

Lakeland turnout gear can now be equipped with the optional Lakeland Fortify particulate blocker. Positioned at interface points on coats and pants, Lakeland Fortify will help further obstruct foreign particulates from making contact with the wearer.

LAZERMAX™

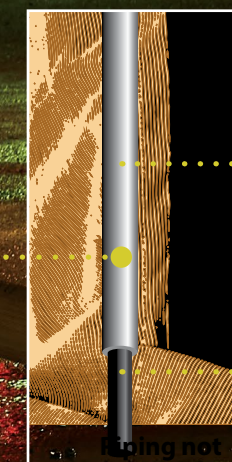
Get the utmost in visibility, day or night, with LazerMax™ Trim Reflective Piping!
LazerMax™ is standard equipment on all Stealth™ and B2™ Turnout Gear!

What Is LazerMax?

Visibility is key for first responders on the scene of an emergency call – that's why we engineered the LazerMax™ piping feature. LazerMax™ is a proprietary patented feature of Lakeland turnout gear that significantly increases the visibility of first responders in low light conditions.

LazerMax™ is created by wrapping 3M® Silver Scotchlite™ material around Kevlar™ cording. The piping is then sewn into the seams of Lakeland garments to make the wearer more visible.

As the original developer of LazerMax™ Trim Reflective Piping, Lakeland is dedicated to continuing to create reliable, affordable turnout gear for first responders.



Outer
3M Scotchlite™
Reflective
Material

Inner Kevlar™
cording





STEALTH WITH LAZERMAX™

We've pushed the limits in ergonomic design, features and aesthetics in a premium garment.

The Stealth™ is light years ahead of the competition and has been proven on the fire grounds and on the Combat Challenge courses. Lightweight and maneuverable, the Stealth™ comes loaded with all the standard features you need, plus more!

Feature List

- Beveled Hem, 29" Front, 35" Back, graded to size.
- Plastic YKK® Brass Zipper/Velcro® Closure
- NYC Style Lime/Yellow 3M™ Scotchlite™ Reflective Material for enhanced visibility - Double Stitched
- Ergonomic Pleated Back/Shoulders
- Easy Grip™ DRD
- Internal Outer Shell Draw Cord to reduce bulk
- Napoleon Pocket under Storm Flap
- Low Profile 3" Collar with Hanger Loop
- Set-In Pleated Ergonomically Curved Sleeves
- 7" Black Kevlar® Thumbhole Wristers
- 5" Deep Black Stedprene Sleeve Wells
- Black Stedshield Coat Cuff Reinforcements – Double Stitched
- 2" x 3.5" x 8" Radio Pocket with Velcro® Antenna Opening on each side of Flap
- Self Mic Strap above Radio Pocket
- Universal Flashlight Holder
- 2" x 8" x 8" Coat Expansion Pockets with Handwarmer and Pull-Tabs on Flap
- Liner Inspection Velcro® Opening
- LazerMax™ Trim

UL Certified to 2018 Edition of NFPA 1971 Standard on Protective Ensembles for Structural Firefighting



Style ST32
Two-tone PBI Model shown

Set in sleeves distribute the weight of the coat evenly over the shoulders, while contour cut gives greater freedom of movement.

Internal Draw-cord back reduces bulk in the front of the coat when donning an SCBA.

Long, beveled back provides additional overlap for protection. Add letters for identification too!



Premium Gear - Premium Features!

Stealth™ Coat Standard Features



Low profile 3" Collar and scooped profile Throat Tab protect without interfering with any SCBA.



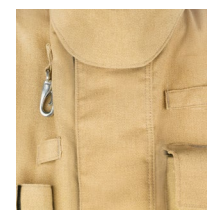
Contour-cut Sleeve ergonomically curved so it bends like the human anatomy, giving greater freedom of movement.



Shoulder Pleats give maximum mobility. Set-in sleeve distributes the weight of the coat evenly over the shoulders.



An extra layer of thermal liner in the shoulders protects from heat buildup in areas of high compression.



3.25" Storm Flap provides plenty of thermal protection. Closure secures with FR Velcro®.



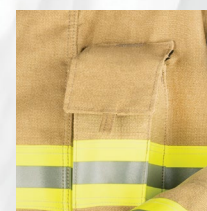
Napoleon Pocket under Storm Flap provides a dry, sterile, secure area for personal belongings.



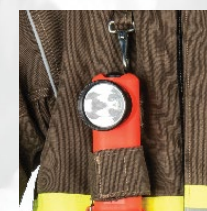
Cuffs feature Black Stedshield reinforcement with a 5" deep sleeve well, great for interfacing with wristlet or gauntlet gloves.



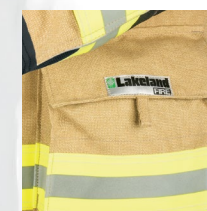
NOW USING NOMEX!
7" Black Nomex® wristers with thumb hole attached to Black Stedprene sleeve wells.



Radio Pocket with mic strap with pocket pull tab loop for attachments. Velcro® antenna openings on both sides of antenna flap.



Universal Flashlight Holder with snap hook, center strap and bottom Velcro® strap fits any flashlight. Flashlight not included.



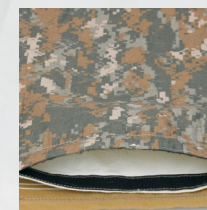
Large 2" x 8" x 8" Expansion Pocket lined with Kevlar® Twill for additional tools. Hand-warmer pocket slots behind expansion pocket.



Draw-cord back allows for reducing of excess material in rear of coat. SCBA's fit better and coat material does not bunch up in front.



Stealth Coat features a long, beveled back providing additional overlap for protection. Add letters for identification too!



Easy access Velcro® Liner Inspection Port in hem of garment for ease of liner inspection.



Pocket Pull-tabs make for easy access with gloves on.

Solid Color or Two-Tone Stealth™ available!

The Stealth can be ordered through our SCX Semi-Custom Program and will come with all the standard features shown. Stealth is available in a wide variety of materials, colors and options.

Two-tone Stealth has:

- Black Bottom Sleeve Panel in same base material as coat body.
- Black Lower Leg Panel in same base material as pant body.
- Colors separated by LazerMax™ Trim
- Includes all Standard features shown

Stealth Turnout Gear Features



EasyGrip™ DRD It's as easy as 1, 2, 3!



Exclusive to Lakeland Gear!

Lakeland recognizes that in extreme emergency situations, speed is essential. So utilizing our exclusive EasyGrip™ DRD system is fast.

1. Peel up the Velcro® attached EasyGrip™
2. Pull straight up and out
3. Slip your gloved hand through the rescue loop and pull. It's that simple. And quick.

Stealth

STEALTH WITH LAZERMAX™

Stealth pants include cutting-edge design elements that focus on comfort, functionality and ergonomics. Exactly what you would expect in a premium set of gear. Continuing the design style of the coat, Stealth pants are beveled cut with a lowered front and a slightly raised back.

Feature List

- Beveled Waist Design – Low front with slight rise towards rear
- Pant Closure: 2" Wide Black Kevlar® Belt with Belt Loop/Handle Grips, Snap and Velcro® Fly Closure
- Single Lower Leg Panel with center rear seam – no side seams exposed to abrasion
- 2" x 10" x 10" Pant Expansion Pocket with pocket pull-tabs, lined with Kevlar® Twill
- Black Stedshield Double Padded Knees with Side Kick Extension Panel
- Black Stedshield Pant Cuff Reinforcements – Double Stitched
- Lime/Yellow 3M™ Scotchlite™ Reflective Material for enhanced visibility – Double Stitched
- Reverse Boot Cut
- Black-Ops Multi Adjust Suspenders – No Metal Suspenders Buttons!
- LazerMax™ Trim



Stealth Turnout Gear Features



Style ST33
Two-tone PBI Model shown

Stealth™ Pant Standard Features



2" Independent Waistband. Pant liner attaches to pants under a hidden flap - no snagging as you don and doff!



Multiple Belt Loops keep belt in place. Handy handle grips make donning pants a breeze.



2" Kevlar® Belt System gives maximum wear and tear.



Two front Belt Loops open with snaps and Velcro® enable use of Class 1 RIT ladder belt.



2" x 10" x 10" Expansion Pockets with pull tabs for easy opening. Pockets lined with Kevlar® Twill for durability.



FR Velcro® Closure on square cut fly.



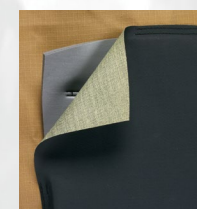
One-piece lower leg gives a better fit and increased mobility while eliminating side seam abrasion.



Dynamic/Radial Pleats above the knees moves in and out as your legs bend, giving greater mobility and less fatigue.



SideKick™ Knee Pad extends the knee panel to the outside of the leg. SideKick™ reduces abrasion when pushing with the side of the knee.



Optional Foam Knee Padding makes sustained crawling more comfortable. Order option PO-FMKPST.



Stealth Internal Harness (IH) Pants

Stealth pants available as an IH Internal Harness Pant using the RIT Class II Kevlar Harness. Also available is the Class 1 RIT Rescue Belt which easily fits into the existing standard Belt loops.

IH Pant option: IH33
Harness option: PO-RITC2

Our Black-Ops™ Suspenders... A Whole New Approach To Keeping Your Pants in Place!

We all know the well-worn joke "Why does a fireman wear suspenders?" (To keep his pants up!) Our radically designed approach keeps the suspenders up too! Our goal was two-fold; eliminate as much metal as possible, including snaps, and to create a new ergonomically shaped system that would eliminate suspenders slipping off the shoulders, and be comfortable at the same time. The result? Black-Ops™. Try them on for size... they are so comfortable you'll forget you are wearing suspenders!



Black-Ops™ Multi-Adjustment System

- Independent yoke system that curves around neck and front for better fit
- Adjustable center sternum strap keeps the suspenders in position
- Vertical tabs for stowing mic or accessories
- Suspenders attach to pants with snap-tabs and segregated MOLLE style loops
- Rip-cord style pulls easily adjust length and fit

Solid Color or Two-Tone Stealth™ available!

The Stealth can be ordered through our SCX Semi-Custom Program and will come with all the standard features shown. Stealth is available in a wide variety of materials, colors and options.

Two-tone Stealth has:

- Black Bottom Sleeve Panel in same base material as coat body.
- Black Lower Leg Panel in same base material as pant body.
- Colors separated by LazerMax™ Trim
- Includes all Standard features shown

Lakeland RIT Belt Option

As an optional feature, Lakeland can equip your pants with the Optional Class 1 RIT Rescue Belt. This belt interfaces with the standard front snap loops, making escape from a hazardous environment easy. Unsnapping the front two belt loops enables the D-ring on the RIT belt to move up to the chest area, stabilizing the wearer as you egress from the hazard.



Front belt loops are unsnapped, with belt in raised configuration.



Pant front belt loops are snapped closed, showing belt in standard configuration.

Stealth



Style BP32 shown in optional Black Pioneer with 3M Segmented Comfort Trim™

B2 WITH LAZERMAX™

B2™ is our workhorse. Nose down and grind it out. Utilitarian in every aspect and more... You don't have to spec out needed options – they're already there!

This power house is ready for battle with all the great Lakeland features you need to get the job done. The B2™ is available custom built, or keep it simple and order our B2™ right off the shelf in our standard material configuration.

Feature List

- 32" Length Coat
- Plastic YKK® Brass Zipper/Velcro® Closure
- NYC Style Lime/Yellow 3M™ Scotchlite™ Reflective Material for enhanced visibility - Double Stitched
- Ergonomic Pleated Back/Shoulders
- Easy Grip™ DRD
- Low Profile 3" Collar with Hanger Loop
- Set-In Pleated Ergonomically Curved Sleeves
- 7" Black Kevlar® Thumb hole Wristers
- 5" Deep Black Stedprene Sleeve Wells
- Black Stedshield Coat Cuff Reinforcements – Double Stitched
- 2" x 3.5" x 8" Radio Pocket with Velcro® Antenna Opening on each side of Flap
- Self Mic Strap above Radio Pocket
- Universal Flashlight Holder
- 2" x 8" x 8" Coat Expansion Pockets with Hand-warmer
- Liner Inspection Velcro® Opening
- 3 Snap Tabs at the hem to secure the liner to the outer shell"
- LazerMax™ Trim



Our Best Selling Gear features LazerMax™ Reflective Trim!

See Page 2 for details

B2 Turnout Gear Features



Our Most Popular Gear with Superior Form, Fit and Function!

Ergonomic contour-cut sleeves give superb freedom of movement

NEW
Nomex® wristers for improved form and fit

32" length... a popular length in the Fire Industry

Pleated shoulder and back goes from the top of the shoulder to the hem of the coat for maximum mobility

LazerMax™ Trim

UL Certified to 2018 Edition of NFPA 1971 Standard on Protective Ensembles for Structural Firefighting

B2™ Coat Standard Features



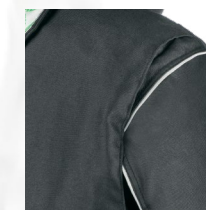
Low profile 3" Collar and scooped profile Throat Tab protect without interfering with any SCBA.



Contour-cut Sleeve ergonomically curved so it bends like the human anatomy, giving greater freedom of movement.



Shoulder Pleats give maximum mobility. Set-in Sleeve distributes the weight of the coat evenly over the shoulders.



An extra layer of thermal liner in the shoulders protects from heat buildup in areas of high compression.



Universal Flashlight Holder fits any flashlight. Flashlight not included.



Large 2" x 8" x 8" expansion pocket lined with Kevlar® Twill for additional tools. Hand-warmer pocket slots behind expansion pocket.



3.25" storm flap provides plenty of thermal protection. Closure secures with FR Velcro®.



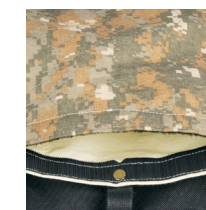
Cuffs feature Black Stedshield reinforcement with a 5" deep sleeve well, great for interfacing with wristlet or gauntlet gloves.



NOW USING NOME!
7" Black Nomex® wristers with thumb hole attached to Black Stedprene sleeve wells.



Radio Pocket with Mic Strap lined with moisture barrier. Antenna Notches left and right.



Easy access Velcro® Liner Inspection Port in hem of garment for ease of liner inspection.

Our Attention to Detail Makes The B2 Our Best Selling Gear!

The challenge? Create a pair of pants designed for maximum protection, comfort and ergonomics while minimizing the weight. The result is B2™. These pants carry over many of the elements of our premier Stealth™ pants, with the addition of a short 3" bib. Round out the feature list with SideKick™ Knee Pads and LazerMax™ trim, and you have pants with no equal!

Feature List

- Lo-Rise Waist Design with small 3" Rear Bib for Overlap Protection.
- Pant Closure: 2" Wide Black Kevlar® Belt with Belt Loop/Handle Grips, Snap and Velcro® Fly Closure
- 2" x 10" x 10" Pant Expansion Pocket lined with Kevlar® Twill
- Black Stedshield Double Padded Knees with Side Kick Extension Panel
- Black Stedshield Pant Cuff Reinforcements – Double Stitched
- Lime/Yellow 3M™ Scotchlite™ Reflective Material for enhanced visibility – Double Stitched
- Reverse Boot Cut
- Black-Ops™ Multi Adjust Suspenders – No Metal Suspender Buttons!
- LazerMax™ Trim

Style BP33 shown in optional Black Pioneer with 3M Segmented Comfort Trim™



Black-Ops™ Suspenders Included!



Handy hand grips make donning quick and easy!

Dynamic Pleated Knees offer greater flexibility

SideKick™ Knee Pads provide greater protection

3" rear bib provides overlap protection

Large Kevlar® lined expansion pockets

Optional 3M Segmented Comfort Trim



B2™ Pant Standard Features



Low-rise waist with small 3" rear bib for overlap protection.



Multiple Belt Loops keep belt in place. Handy handle grips make donning pants a breeze.



2" Kevlar® Belt System gives maximum wear and tear.



Two front Belt Loops open with Snaps and Velcro® enable use of Class 1 RIT ladder belt.



2" x 10" x 10" expansion pockets lined with Kevlar® Twill for durability.



FR Velcro® closure on square cut fly.



Dynamic Pleats above the knees moves in and out as your legs bend, giving greater mobility and less fatigue.



SideKick™ Knee Pad extends the knee panel to the outside of the leg. SideKick™ reduces abrasion when pushing with the side of the knee.

B2™ – A Complete Protection System!



The 32" B2 coat and bib pants combine to make a perfect protection system. The short 3" bib is all that's needed to ensure complete overlap and protection from the elements.



B2 Turnout Gear Features





B1

UL Certified to 2018 Edition of NFPA 1971 Standard on Protective Ensembles for Structural Firefighting

B1™ COAT

Want a feature-laden set of gear without breaking the bank? Then the B1™ was tailor-made just for you. It has all of the “every day gotta-have” features that you need to get the job done. Features the competition sells as options, the B1™ has as standard.

All at a price you can afford.

Feature List

- 32" Length Coat
- Plastic Delrin® YKK® Zipper/Velcro® Closure
- NYC Style Lime/Yellow 3M™ Scotchlite™ Reflective Material for enhanced visibility - Double Stitched
- Easy Grip™ DRD
- Low Profile 3" Collar with Hanger Loop
- Set-In Pleated Ergonomically Curved Sleeves
- 7" Black Kevlar® Thumbhole Wristers
- 5" Deep Black Stedprene® Sleeve Wells
- Black Stedshield Coat Cuff Reinforcements - Double Stitched
- 2" x 3.5" x 8" Radio Pocket with Velcro® Antenna Opening on each side of Flap
- Self Mic Strap above Radio Pocket
- Universal Flashlight Holder
- 2" x 8" x 8" Coat Expansion Pockets with Handwarmer
- Liner Inspection Velcro® Opening

Style BA32 shown in optional Khaki Advance Outer Shell material



EasyGrip™ DRD for quick response in emergency situations

32" length coat is a standard in the fire industry

B1™ Coat Standard Features



Low profile 3" Collar and scooped profile Throat Tab protect without interfering with any SCBA.



Contour-cut Sleeve ergonomically curved so it bends like the human anatomy, giving greater freedom of movement.



Set-in Sleeve distributes the weight of the coat evenly over the shoulders.



An extra layer of thermal liner in the shoulders protects from heat buildup in areas of high compression.



3.25" Storm Flap provides plenty of thermal protection. Closure secures with FR Velcro®.



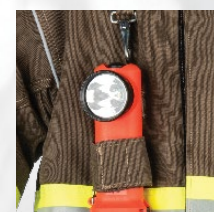
Cuffs feature Black Stedshield reinforcement with a 5" deep Sleeve Well, great for interfacing with wristlet or gauntlet gloves.



7" Black Kevlar® Wristers with thumb hole attached to Black Stedprene Sleeve Wells.



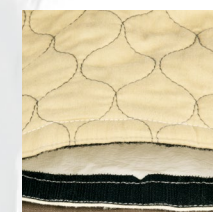
Radio Pocket with Mic Strap lined with moisture barrier. Antenna Notches left and right.



Universal Flashlight Holder fits any flashlight. Flashlight not included.



Large 2" x 8" x 8" Expansion Pocket lined with Kevlar® Twill for additional tools. Hand-warmer Pocket Slots behind expansion pocket.



Easy access Velcro® Liner Inspection Port in hem of garment for ease of liner inspection.



Want LazerMax on Your B1™ Gear? No Problem! Order Option CO-RP

Customize your set of B1™ gear with LazerMax™ Reflective Piping! It will give your gear the distinctive look only LazerMax™ can deliver, with the benefit of additional safety in low light situations.

B1 Turnout Gear Features



B1

Premium features and affordable pricing are the standard for Lakeland's B1 turnout gear!

B1™ PANTS

Sometimes all you need are the basics, with no bells and whistles. The B1™ provides the basics, plus features pulled from our B2™ line of gear. The protection you need. All at a price you can afford.

Feature List

- Low-Rise Waist Design with small 3" Rear Bib for Overlap Protection.
- Pant Closure: Hook & Dee, Snap with Velcro® Fly Closure
- 2" x 10" x 10" Pant Expansion Pocket lined with Kevlar® Twill
- Black Stedshield Double Padded Knees with Side Kick Extension Panel
- Black Stedshield Pant Cuff Reinforcements – Double Stitched
- Lime/Yellow 3M™ Scotchlite™ Reflective Material for enhanced visibility – Double Stitched
- Reverse Boot Cut
- Black-Ops Multi Adjust Suspenders – No Metal Suspender Buttons!

B1 Turnout Gear Features



Low-rise 3" Bib

Quick take-up straps for easy adjustments

Double-stitched Stedshield® cuffs



Style BA33 shown in optional Khaki Advance Outer Shell material



Simple to don, easy to wear, reliable protection when you need it most.

B1™ Pant Standard Features



Low-rise waist with small 3" rear bib for overlap protection



Hook and Dee with FR Velcro® closure on square cut fly



Take-up straps with high temp Delrin® buckles (no metal!) make adjustments quick and easy



2" x 10" x 10" expansion pockets with pull tabs for easy opening. Pockets lined with Kevlar® Twill for durability



SideKick™ Knee Pad extends the knee panel to the outside of the leg. SideKick™ reduces abrasion when pushing with the side of the knee



Optional foam knee padding makes sustained crawling more comfortable. Order option PO-FMKP

B1™ PROXIMITY GEAR



The Proximity Series combines the quality custom features of the MTS ordering program, with a highly reflective aluminized layer. When you have to face high temperatures or high risk situations, the Proximity Series provides the ultimate protection.



Coat Style: BAC17
Pant Style: BAP17

B1



ATTACK

Lakeland's A10™ Attack is a traditional style of turnout gear that fits into firefighting roles at industrial plants, or for use in academies and rental facilities. Strictly designed with economy and price point in mind, the A10™ will protect while complying with necessary OSHA requirements.

Coat Feature List

- 35" Length Coat
- Zipper/Velcro® Closure
- NFPA Basic Lime/Yellow 3M™ Scotchlite™ Reflective Material for enhanced visibility - Double Stitched
- Easy Grip™ DRD
- Low Profile 3" Collar with Hanger Loop
- Set-In Pleated Ergonomically Curved Sleeves
- 7" Black Kevlar® Thumbhole Wristers
- 5" Deep Black Stedprene® Sleeve Wells
- Black Stedshield Coat and Pant Cuff Reinforcements
- 2" x 10" x 10" Coat Expansion Pockets Lined with Kevlar® Twill
- Liner Inspection Velcro® Opening on Coat and Pant Liner Systems

Pants Feature List

- Pant Closure: Hook & Dee, Snap with Velcro® Fly Closure
- Side Take-Up Straps with low-profile High Temp (HT) Delrin Sliders for easy adjustment Black Stedshield® Double Padded Knees with Side Kick Extension Panel
- Black Stedshield® Pant Cuff Reinforcements - Double Stitched
- Lime/Yellow 3M™ Scotchlite™ Reflective Material for enhanced visibility - Double Stitched
- Reverse Boot Cut
- Black-Ops™ Multi Adjust Suspenders - No Metal Suspender Buttons!



A10™ Coat Features



Low profile 3" collar and scooped profile throat tab protect without interfering with any SCBA.



Contour cut sleeve ergonomically curved so it bends like the human anatomy, giving greater freedom of movement.



Set-in sleeve distributes the weight of the coat evenly over the shoulders.



An extra layer of thermal liner in the shoulders protects from heat buildup in areas of high compression.



3.25" storm flap provides plenty of thermal protection. Closure secures with FR Velcro®



Cuffs feature black Stedshield™ reinforcement with a 5" deep sleeve well, great for interfacing with wristlet or gauntlet gloves



7" black Kevlar® wristers with thumb hole



Large 2" x 10" x 10" expansion pocket lined with Kevlar® twill for additional tools.

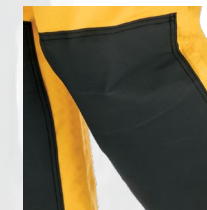
A10™ Pant Features



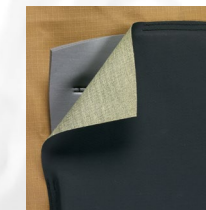
Hook and Dee with FR Velcro® closure on square cut fly



Take-up straps with high temp Delrin® buckles (no metal!) make adjustments quick and easy



SideKick™ Knee Pad extends the knee panel to the outside of the leg. SideKick™ reduces abrasion when pushing with the side of the knee



Optional foam knee padding makes sustained crawling more comfortable. Order option PO-FMKP



A10™ Proximity Gear

The Proximity Series combines the quality custom features of the MTS ordering program, with a highly reflective aluminized layer. When you have to face high temperatures or high risk situations, the Proximity Series provides the ultimate protection.

Coat Style: ATC17
Pant Style: ATP17

From the academy to the frontlines, Lakeland's A10™ turnout gear offers protection at the right price.

Attack Turnout Gear Features



Attack

MATERIALS

OUTER SHELLS

Nomex®



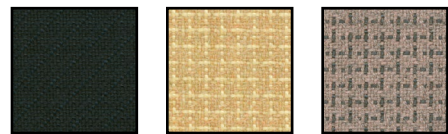
Content: 93% Nomex®/5% Kevlar®/2% Anti-static blend spun yarn
Material Weight: 7.5oz/yd²
Plain Weave

Pioneer™



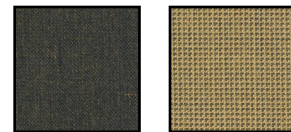
Content: 70/30 Kevlar®/Nomex® spun yarn with Enforce Technology™
Material Weight: 6.6oz/yd²
Twill Weave

Armor™ AP



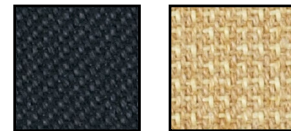
Content:
Gold/Black: 80% Nomex®/Kevlar® spun yarns, 20% 400 denier Kevlar® filament
Khaki: 80% Nomex®/Kevlar®/Teijinconex® spun yarns, 20% 400 denier Kevlar® filament
Weave: Comfort Twill with Filament Twill Technology
Material Weight: 6.5oz/yd²

Agility



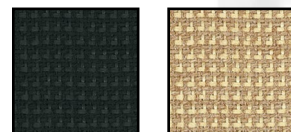
Content: Nomex®/Kevlar®/Polyoxazole with Enforce Technology
Material Weight: 6.6oz/yd²
Twill Weave

Kombat™ Flex



Content: 70% PBI®/Kevlar® blend spun yarn with 30% Kevlar® filament
Material Weight: 6.9oz/yd²
Twill Weave

PBI Max®



Content: 70% PBI®/DuPont Kevlar Spun Yarns
30% 600 Denier DuPont Kevlar Filament
Material Weight: 7.0oz/yd²
Twill Weave

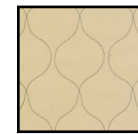
THERMAL LINERS

Q8



Face Cloth: Meta-aramid, FR modacrylic (spun)
Batting: Aramid, FR rayon, needle-punch, non-woven, reprocessed batt
Total Weight: 8.0oz/yd²

Defender™ M NP Brass



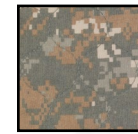
Face Cloth: Lenzing FR® Rayon, para-aramid, Nylon (spun yarn) Plain Weave
Batting: 1-Layer Aramid Needle Punch
Total Weight: 7oz/yd²
Color: Brass

Prism Pure



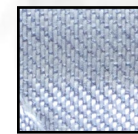
Weave: Channeling Raindrop
Batting: 4.0 oz. Pure Virgin DuPont™
Battings: Nomex®/Kevlar® needle punch batting
Color: Black and Tan

Defender™ M SL2



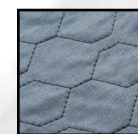
Face Cloth: Lenzing FR®/Para Aramid/Nylon blend spun yarn, plain weave
Batting: 2 layers of Nomex® spun lace (2 layers of 2.3 oz/yd²)
Total Weight: 7.8 oz/yd²

Glide Ice™ 2-Layer



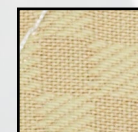
Face Cloth: 3.6 oz/yd² 60% Nomex® filament 40% DuPont Nomex®/Lenzing FR spun yarn
Batting: 2 layers of Nomex® E89™ spunlace (2.3 oz/yd² and 1.5 oz/yd²)
Total Weight: 7.4 oz/yd²

Titanium SL2



Face Cloth: Nomex® filament yarn with Lenzing FR®/Kevlar®/Nylon blend spun yarn, twill weave.
Batting: 2 layers of Nomex non-woven spun lace (2.3 and 1.5 oz/yd²)
Total weight 7.7 oz/yd²

Quantum SL2



Face Cloth: Kevlar® filament yarn with Lenzing FR®/Kevlar®/Nylon spun yarn, check weave
Batting: Nomex®/Kevlar® non-woven spun lace (2.3 oz/yd² with waffle design and 1 layer 1.5 oz/yd²)
Total Weight: 7.7 oz/yd²

MOISTURE BARRIERS

Stedair® 3000



Substrate: Nomex® non-woven spun lace
Film: Bi-component ePTFE membrane
Total Weight: 5.2oz/yd²
Supplier Warranty: 3 Years

Stedair® 4000



Substrate: Nomex® woven paja-ma check
Film: Bi-component ePTFE membrane
Total Weight: 5.5oz/yd²
Supplier Warranty: 4 Years

Stedair® Gold



Substrate: PBI®/Nomex® blend non-woven spun lace
Film: Bi-component ePTFE membrane
Total Weight: 5.2oz/yd²
Supplier Warranty: 4 Years

MATERIALS MATRIX

OUTER SHELLS	STEDAIR MOISTURE BARRIERS	THERMAL LINERS
SYNERGEY (NOMEX®)	3000	Q-8 / Defender M Brass NP / Prism
BRIGADE 750 (NOMEX®)	3000	Q-8 / Defender M Brass NP / Titanium SL2
PIONEER	3000	Q8 NOMEX Quilt / Defender M Brass NP / Prism
PIONEER	3000 / 4000	Defender M SL2 CAMO / OMNI Synergy
PIONEER	3000 / 4000 / GOLD	Titanium SL2 / Glide ICE
PIONEER	GOLD	Quantum 3D
ARMOR AP	3000	Defender M Brass NP
ARMOR AP	3000 / 4000	Prism / Defender M SL2 CAMO
ARMOR AP	3000 / 4000	Glide Ice / Titanium SL2
ARMOR AP	GOLD	Glide Ice
AGILITY	3000 / 4000	Defender M SL2 Camo / OMNI Synergy
AGILITY	3000 / 4000 / GOLD	Titanium SL2 / Glide ICE / Quantum 3D
KOMBAT FLEX	3000	Defender M Brass NP
KOMBAT FLEX	3000 / 4000	Defender M SL2 Camo / OMNI Synergy
KOMBAT FLEX	3000 / 4000 / GOLD	Titanium SL2 / Glide ICE / Quantum 3D
PBI MAX	3000	Defender M Brass NP / Defender M SL2 CAMO
PBI MAX	3000 / 4000 / GOLD	Glide ICE 2-Layer / Titanium SL2 / Quantum 3D
1098 ALUM PBI	3000	Q-8 / Defender M Brass NP / Titanium SL2
1088 ALUM PARA-ARAMID	3000	Q-8 / Defender M Brass NP / Titanium SL2
1098 ALUM PBI	3000	Aralite NP* While supplies last
1098 ALUM PBI	3000	Defender M Brass NP
1098 ALUM PBI	3000	Titanium SL2i
1088 ALUM PARA-ARAMID	3000	Q-8 NOMEX Quilt
1088 ALUM PARA-ARAMID	3000	Defender M Brass NP
1088 ALUM PARA-ARAMID	3000	Titanium SL2i



WILDLAND GEAR

UL Certified to NFPA 1977 Standard

LAZERMAX
HI-VIS TECHNOLOGY

3M **Scotchlite**
Reflective Material

CLASSIFIED
UL

Get the utmost in visibility, day or night, with LazerMax™ reflective piping!

LAZERMAX
HI-VIS TECHNOLOGY



Wildland Fire Coat - Style WLSCT

WLSCTN26 - 6 oz. Yellow Nomex®
WLSCTI26 - 9 oz. Yellow FR Indura®

- Coat Length: 4" grade front to back; Ex: (XL) 32" Front / 36" Back
- 3M™ Scotchlite™ Reflective Material - 2"
- High-Temp Black Delrin® YKK Zipper with Velcro® Front Closure
- 2-Piece Curved Set-In Pleated Sleeves
- Elasticized cuffs with rugged take-up straps
- Vertical Back Pleats
- 2" x 3.5" x 8" Radio Pocket with mic strap on Left Chest
- 5.5" x 6" Pleated Pocket with flap on Right Chest
- 2" x 8" x 8" Cargo/Handwarmer Base Pockets
- LazerMax™ Reflective Piping on sleeves, shoulders and back



Velcro® sleeve adjustment | 2 piece curved set-in sleeves for maximum mobility | Large cargo/hand warmer pockets | LazerMax™ trim for superior night-time visibility



Wildland Fire Shirt - Style WLSH

WLSHN26 - 6 oz. Yellow Nomex®
WLSHTS26 - 7 oz. Yellow TecaSafe® Plus

- Banded Collar
- Vented Rear Yoke
- Hidden Front Button Placard
- 3M™ Scotchlite™ Reflective Material - 1" (Heat Transfer) on upper back and sleeves
- Two 5" x 6" Center Pleat Chest Pockets with Flaps
- Elasticized cuffs with rugged take-up straps



Hidden front button placard | Pleated chest pockets with flaps | Velcro® sleeve adjustment



Wildland Fire Pants - Style WLSPT

WLSPTN26 - 6 oz. Yellow Nomex®
WLSPTI26 - 9 oz. Yellow FR Indura®

- 3M™ Scotchlite™ Reflective Material - 2"
- High-Temp Black Delrin® YKK Zipper Fly Closure
- 2" Elasticized Rear Waistband
- Five 3.5" Belt Loops
- Side Slash Pocket
- 2" x 10" x 10" Expansion Pockets
- 6" x 6.5" Rear Pleated Pockets with Flaps
- Triple Pleated Knees
- Elasticized cuffs with rugged take-up straps
- LazerMax™ Trim on outside leg seams



Wildland Fire Pants - Style WLPT

WLPTN19 - 6 oz. Spruce Green Nomex®
WLPTI19 - 9 oz. Spruce Green FR Indura®

- High-Temp Black Delrin® YKK Zipper Fly Closure
- 2" Elasticized Rear Waistband
- Five 3.5" Belt Loops
- Side Slash Pocket
- 2" x 10" x 10" Expansion Pockets
- 6" x 6.5" Rear Pleated Pockets with Flaps
- Triple Pleated Knees
- Elasticized cuffs with rugged take-up straps
- 3M™ Scotchlite™ Reflective Material
- LazerMax™ Trim on outside leg seams



Wildland Fire Coverall - Style WLSCV

WLSCVN26 - 6 oz. Yellow Nomex®
WLSCVI26 - 9 oz. Yellow FR Indura®

- 3M™ Scotchlite™ Reflective Material - 2"
- High-Temp Black Delrin® YKK Zipper Front Closure
- Stand Up Overlapping Collar
- 2-Piece Set-In Sleeves
- Elasticized cuffs with rugged take-up straps
- Vertical Back Pleats
- 2" x 3.5" x 8" Radio Pocket on Left Chest
- Mic Strap above Radio Pocket
- 5" x 5" Spade Pocket with flap on Right Chest
- Side Slash Pocket
- Pass thru pockets with Snap closure
- 2" x 10" x 10" Expansion Pockets
- Two 6.5" x 8" Rear Internal Seat Pockets with Flaps
- Self-Material Reinforced Knees
- 18" High-Temp Black Delrin® YKK Leg Zippers
- LazerMax™ Trim on outside Arm and Body/Leg seams



Our Black-Ops Suspender System – now available on all Wildland Pants!

Order our optional Black-Ops™ Suspender System, or the 2" Kevlar Belt. Or go crazy and get both!
Order option 135R (regular length) or 135S (short length)



DUAL CERTIFIED GEAR

All Lakeland Dual Certified Gear is UL Certified to NFPA 1951 and NFPA 1977

Ergonomic gear that meets NFPA 1977/1951 Wildland/Urban Search and Rescue (Utility)

DCCVD Coverall:

- Outershell: 6.5oz Defender M Gold Woven Rip-Stop (FR Rayon – 65%, P-Aramid – 25%, Nylon – 10%)
- Stand Up Overlapping Collar
- 2-Piece Set-In Sleeves
- Elasticized Cuffs with Beefy Take-Up Straps
- Vertical Back Pleats
- 2x3.5x8 Radio Pocket on Left Chest
- Mic Strap above Radio Pocket
- 5x5 Spade Pocket with flap on Right Chest
- Elasticized Waist with adjustable Take-Up Straps
- Side Slash Pocket
- Pass thru pockets with Snap closure
- 2x10x10 Expansion Pockets
- (2) 6.5x8 Rear Internal Seat Pockets with Flaps
- Black Ara-Shield Knee Reinforcements
- 18" High-Temp Black YKK Brass Leg Zippers
- 3M™ Scotchlite™ Segmented Reflective Material for enhanced visibility
- LazerMax™ Trim on outside Arm and Body/Leg seams



Style DCCVD



Stand-up Overlapping Collar provides neck protection when needed.

2-piece Set-in Sleeves allow maximum mobility.

Take-up Straps at cuff and waist give maximum adjustments.

Radio Pocket with Mic Strap fits a variety of radio manufacturers.

Pockets galore! Spade, Side Slash, Expansion, and Seat pockets.

LazerMax™ Reflective Piping for maximum night-time visibility.



DCCTD Coat:

- Outershell: 6.5oz Defender M Gold Woven Rip-Stop (FR Rayon – 65%, P-Aramid – 25%, Nylon – 10%)
- Coat Length: 4" grade front to back; Ex: (XL) 32" Front / 36" Back
- Stand-up Overlapping Collar
- 2-Piece Curved Set-In Pleated Sleeves
- Elasticized Cuffs with Beefy Take-Up Straps
- Vertical Back Pleats
- 2" x 3.5" x 8" Radio Pocket on Left Chest
- Mic Strap above Radio Pocket
- 5.5" x 6" Pleated Pocket with flap on Right Chest
- 2" x 8" x 8" Cargo/Hand-warmer Base Pockets
- 3M™ Scotchlite™ Segmented Reflective Material for enhanced visibility
- LazerMax™ Reflective Piping on sleeves, shoulders and back



Style DCCTD



Stand-up Overlapping Collar provides neck protection when needed.

2-piece Set-in Sleeves allow maximum mobility.

Radio Pocket with Mic Strap fits a variety of radio manufacturers.

LazerMax™ Reflective Piping for maximum night-time visibility.



DCPTD Pants

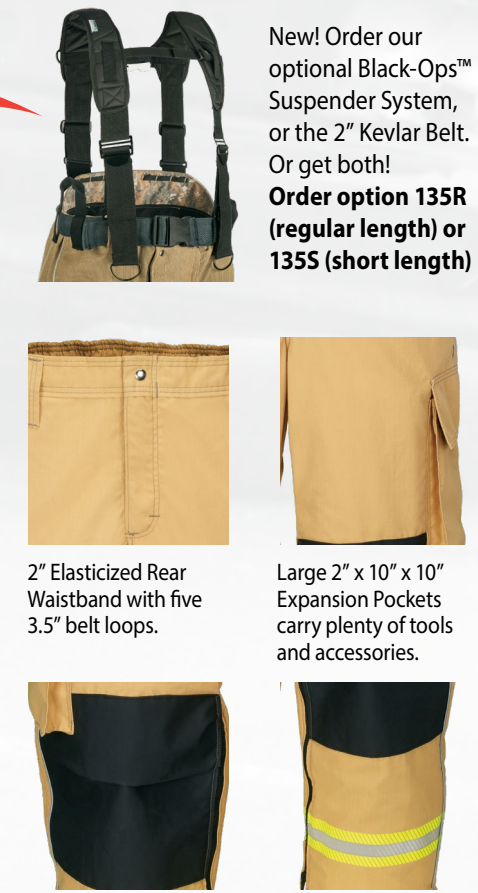
Our Dual Cert Pants just got better!

We've upgraded the pants to include the snap-tabs and segregated MOLLE style loops! This feature allows you to install as an option our Black-Ops Suspenders! Or, order our 2" Kevlar® belt for maximum wear and tear!

- Outershell: 6.5oz Defender M Gold Woven Rip-Stop (FR Rayon – 65%, P-Aramid – 25%, Nylon – 10%)
- 2" Elasticized Rear Waistband
- Five 3.5" Belt Loops
- Side Slash Pocket
- 2" x 10" x 10" Expansion Pockets
- 6" x 6.5" Rear Pleated Pockets with Flaps
- Triple Pleated Knees
- Black Ara-Shield Reinforced Knees
- 18" High-Temp Black YKK Brass Leg Zippers
- Beefy Take-Up Strap at Cuffs
- 3M™ Scotchlite™ Segmented Reflective Material for enhanced visibility
- LazerMax™ Trim on outside leg seams



Style DCPTD



New! Order our optional Black-Ops™ Suspender System, or the 2" Kevlar Belt. Or get both!

Order option 135R (regular length) or 135S (short length)

2" Elasticized Rear Waistband with five 3.5" belt loops.

Large 2" x 10" x 10" Expansion Pockets carry plenty of tools and accessories.

Triple Pleated Knees allow maximum movement and bending.

LazerMax™ Reflective Piping for maximum night-time visibility.



911 SERIES EXTRICATION GEAR

Red - Special Order



Style EXCT

Extrication Coat Feature List

- Stand-Up Collar with overlapping Storm Flap
 - Zipper and Velcro® Front Closure
 - Pleated Shoulders for increased mobility and reach
 - Pleated Ergonomically Curved Set-In Sleeves
 - Self-Reinforced Elbows
 - Elasticized Cuffs with Rugged Take-Up Straps
 - Pocket on left Sleeve with Pencil Slot
 - Radio Pocket with Mic Strap on Left Chest
 - Stethoscope pocket on Right Chest with Utility Loop at bottom
 - 2" x 8" x 8" Expansion Pockets with 3M Silver Reflective Pull-Tabs
 - Lime/Yellow Triple Trim
 - LazerMax™ Trim
- Material: 7 oz. FR Cotton
Colors: Navy, Tan, (Red - Special Order)



Extrication Coveralls Feature List

- Stand-Up Overlapping Collar
 - Zipper and Velcro® Front Closure
 - Pleated Shoulders for increased mobility and reach
 - Ergonomically Curved Set-In Sleeves
 - Self-Reinforced Elbows
 - Elasticized Cuffs with Rugged Take-Up Straps
 - Pocket on left Sleeve with Pencil Slot
 - Radio Pocket with Mic Strap on Left Chest
 - Stethoscope pocket on Right Chest with Utility Loop at bottom
 - Elasticized Rear Waist Band with Take-Up Straps
 - Rear Hip Pockets with Velcro® Flaps
 - 2" x 10" x 10" Expansion pockets on legs
 - Scissor pocket with strap on Right Side Pocket
 - Padded Polymer Back Coated Para-Aramid Knee Reinforcements
 - 18" HT Delrin® Leg Zippers
 - Rugged Take-Up Strap at Cuffs
 - Lime/Yellow Triple Trim
 - LazerMax™ Trim
- Material: 7 oz. FR Cotton
Colors: Navy, Tan, Red (Special Order)



Style EXCV



Left sleeve pocket with pencil slot



Spacious expansion pockets



Self-reinforced elbows



Padded Polymer Back Coated Para-Aramid Knee Reinforcements



Stethoscope pocket on Right Chest with Utility Loop at bottom



911 Extrication Gear is NOT an NFPA Certified garment



Style EXPT

Red - Special Order

Extrication Pant Feature List

- Zipper Fly with Snap
 - 2" Elasticized Rear Waistband
 - Belt Loops
 - Side Entry Slash Pockets
 - Rear Hip Patch Pockets with Velcro® Flaps
 - 2" x 7" x 9" Expansion pockets on legs
 - Scissor pocket with strap on Right Side Pocket
 - Triple Pleated Knees
 - Padded Polymer Back Coated Para-Aramid Knee Reinforcements
 - 18" HT Delrin Leg Zippers
 - Rugged Take-Up Strap at Cuffs
 - Lime/Yellow Triple Trim
 - LazerMax™ Trim
- Material: 7 oz. FR Cotton
Colors: Navy, Tan, (Red - Special Order)



NEW

Utility Pants

- (Compliant to NFPA 1977 Wildland)
- Spacious expansion pockets on legs
 - LazerMax™ Trim
 - Stedshield® Knee Pad
 - 2" triple trim at cuff
- Material: 6oz Nomex®
Color: Navy
Sizes: Small-5X



LazerMax™ Trim

Expansion Pockets

Stedshield® Knee Pads

2" Triple Trim

Style EMSPTN13

911 Extrication Gear is NOT an NFPA Certified garment



ANSI PLUS 2 PARKA

Mic Tabs on each shoulder

Storm Flap with Snaps

Utility Pocket inside Parka

Cargo Pockets

Hook and Loop Adjustable Cuffs



Lined Hood with brim, snaps on and off

Ventilated Back Panel

Clear Pocket for ID

YKK Zipper under Storm Flap

Hand-warmer Pockets

CANSIP2L

ANSI Plus 2 Parka... Mother Nature, Give Us Your Best Shot!

Introducing Lakeland's ANSI Plus 2 Parka. Redesigned from the ground up, the Plus 2 Parka is two jackets in one! The Parka Plus 2 outer shell is a versatile jacket you'll reach for day after day. There are plenty of pockets to carry all the essentials. The inner fleece shell zips out to become another jacket.

- Exceeds ANSI/ISEA 107-2010 Class 3 specifications
- 32" length jacket
- Wind resistant and water repellent nylon outer shell
- Inner fleece liner is a valuable layering piece
- Wear the inner fleece alone as a second jacket, or as a liner to the nylon shell
- Hi-Vis Yellow color
- Silver reflective trim

Style Number: CANSIP2L

Standard: ANSI 107, Class 3

Sizes: S-6XL

Tall Sizes: LT-6XT

Color: Hi-Vis Yellow - Black



Don't Forget Your Gloves! Thinsulate® Lined

- Hi-Visibility Reflective Glove
- 100% Nylon Shell
- 3M Thinsulate® Liner
- Silver Reflective Trim

Sizes: S - 2XL

Color: Hi-Vis Yellow

Great Accessories to Complete Your Fire Gear Needs!



Removable Zip-Out Liner!

Second Generation High Contrast Bomber Jacket

- Hi-Vis Yellow Shell with contrasting 3" trim
- All seams are sealed for foul weather use
- Fabric is FR treated and breathable
- Removable Zip-Out liner
- Plenty of pockets!
- 2 mic tabs
- Two way heavy duty zipper
- Non-conductive closures

Style Number: C3SAFRG2L

Standard: ANSI 107, Class 3, ISO 14116-1:2008
Protection against heat and flame-Limited flame spread materials, material assemblies and clothing

Color: Hi-Vis Yellow

Sizes: S - 6XL, MT - 6XT (Tall)



FIVE POINT BREAKAWAY

Public Safety 5 Point Breakaway Mesh Vest

- 5 point breakaway style
- Open sides
- Hook and loop closure

Style Number: VAMOSC2GBV

Fabric: FR Treated Polyester Mesh

Sizes: Regular/Oversized

Color: Hi-Vis Yellow or Orange
Meets ANSI 207-2006



Gear Bag

Nylon gear bag measures 30" x 17" x 17". Roomy interior for all your gear storage needs. Includes shoulder strap for easy carry.

Style Number: PKGC15



SCBA Cylinder Cover

Identify key manpower on scene. Covers available in sizes for both 30 min and 60 min SCBAs.

Style Number: SCBA-COV

Colors: Red, Blue, Orange



OPTIONS AND ACCESSORIES / TRIM PATTERNS



3" NFPA Basic



3" Project Fires

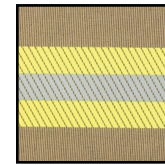


3" Hi-Visibility

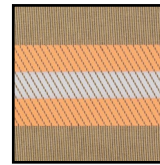


3" NYC

TRIM MATERIALS



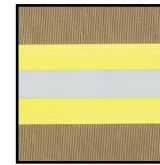
3M Comfort Segmented Trim Lime/Yellow: CO-SEGLS3, PO-SEGLS3



3M Comfort Segmented Trim Red/Orange: CO-SEGRS3, PO-SEGRS3



3M Red/Orange Triple Trim



3M Lime/Yellow Triple Trim

FLAGS



Embroidered American Flag EMB01-FLG



Embroidered SWAT American Flag EMBOS-FLG



Embroidered Canadian Flag EMB02-FLG

FOAM PADDING



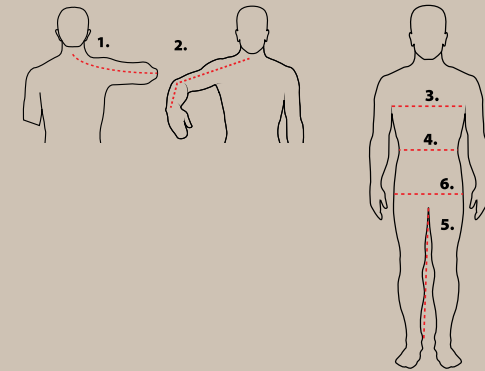
FR Foam Knee Padding Stealth: PO-FMKPST A10, B1, B2: PO-FMKP

RIT BELT



PO-RITRB

SIZING - GET THE RIGHT FIT!



Measuring Instructions

- Sleeve:** Begin tape measure at nape of neck...
- Follow** the outside contour of arm around elbow to 1" past wrist bone or fatty part of palm.
- Chest:** Have Firefighter inhale and hold breath while you measure around the fullest part of the chest, keeping tape under arms and around shoulder blades.
- Waist:** Measure around waist, over shirt and slacks at height you normally wear your slacks. Keep one finger between tape and body.
- Inseam:** Wearing normal station wear, measure from crotch inner seam to ankle bone or desired length.
- Hips (Women only):** Measure around fullest part of hips.

Note for Sleeve Measurement: For unusually long or short arms measure sleeve by holding arm out and forward as shown below; however, sleeve lengths are graded to chest size so measuring is usually not necessary.

Important Instructions for Pant Waist Measurements

- When using a tape to measure pants**
- If Measuring Close to the Body:** Pant waist should be measured as close to the body as possible. Lakeland turnout pants are constructed with a 4" built-in easement at waist, so wearing a lighter weight garment, such as shorts, at the time of measurement will determine a more accurate measurement. Example: If tape measurement close to body is 46", a size 46" waist should be ordered.
 - If Measuring Over Clothing:** Deduct 4" from final measurement. Example: If tape measurement over clothing is 40", a size 36" waist turnout pant should be ordered.
 - When using sizing samples:** The size of each sizing sample pant is clearly displayed on the outside of the pants. Find a pant that fits and order the size indicated on the pant.

Call for special/custom sizing

TURNOUT GEAR

Turnout Coat												
Chest	34	36	38	40	42	44	46	48	50	52	54	56
Sleeve	32.5	33.25	33.75	34.5	35	35.75	36.5	37.25	38	38.75	39.5	40.25

Special sleeve lengths are available in 1" increments.
Coat chest available in 2" increments.

Turnout Pant												
Waist	30	32	34	36	38	40	42	44	46	48	50	52

Pant waist and inseams available in 2" increments.

WILDLAND AND DUAL CERTIFIED GEAR

Coat & Shirt									
	S	M	L	XL	2XL	3XL	4XL	5XL	6XL
Chest	36-38	40-42	44-46	48-50	52-54	56-58	60-62	64-66	68-70
Sleeve	34	35	36	37	38	39	40	41	42

Pant									
	S	M	L	XL	2XL	3XL	4XL	5XL	6XL
Waist	26-28	30-32	34-36	38-40	42-44	46-48	50-52	54-56	58-60

Inseams available in 2" increments.

Coveralls																		
	S		M		L		XL		2XL		3XL		4XL		5XL		6XL	
Chest	36-38		40-42		44-46		48-50		52-54		56-58		60-62		64-66		68-70	
Sleeve/ Inseam	Sleeve	Inseam	Sleeve	Inseam	Sleeve	Inseam	Sleeve	Inseam	Sleeve	Inseam	Sleeve	Inseam	Sleeve	Inseam	Sleeve	Inseam	Sleeve	Inseam
	X-Short	30	26	31	26	32	26	33	26	34	26	35	26	36	26	37	26	38
Short	32	28	33	28	34	28	35	28	36	28	37	28	38	28	39	28	40	28
Regular	34	30	35	30	36	30	37	30	38	30	39	30	40	30	41	30	42	30
Tall	36	32	37	32	38	32	39	32	40	32	41	32	42	32	43	32	44	32
X-Tall	38	34	39	34	40	34	41	34	42	34	43	34	44	34	45	34	46	34

X-Short Coveralls: Subtract 4" from standard sleeve and inseam lengths. and 1" from torso

Short Coveralls: Subtract 2" from standard sleeve and inseam lengths. and 1" from torso

Tall Coveralls: Add 2" to standard sleeve and inseam lengths. and 1" to torso

X-Tall Coveralls: Add 4" to standard sleeve and inseam lengths. and 1" to torso

If chest measurement falls between sizes, go up to next larger size



LAKELAND CHEMICAL/HAZMAT PPE

Lakeland Industries is a manufacturer of chemical protective clothing for First Responders and HazMat Teams around the globe. For protection from bloodborne pathogens and viral contamination, all the way up to vapor tight Level A suits, Lakeland has a comprehensive product offering to address your protective clothing requirements.

Contact your Lakeland representative for additional information on these products and schedule a more detailed discussion on the benefits of choosing Lakeland.



Innovative Technology In Selecting Chemical Protection

Lakeland's advanced chemical protective fabrics:

- ChemMax® 3
- ChemMax® 4 Plus
- Interceptor® Plus

Are Supported By



Calculate safe use times and access information on 4,000+ chemicals with PermaSURE®

