



## B1™ COAT



### Feature List

- 32" Length Coat
- Plastic Delrin® YKK® Zipper/Velcro® Closure
- NYC Style Lime/Yellow 3M™ Scotchlite™ Reflective Material for enhanced visibility - Double Stitched
- Easy Grip™ DRD
- Low Profile 3" Collar with Hanger Loop
- Set-In Pleated Ergonomically Curved Sleeves
- 7" Black Kevlar® Thumbhole Wristers
- 5" Deep Black Stedprene® Sleeve Wells
- Black Stedshield Coat Cuff Reinforcements – Double Stitched
- 2" x 3.5" x 8" Radio Pocket with Velcro® Antenna Opening on each side of Flap
- Self Mic Strap above Radio Pocket
- Universal Flashlight Holder
- 2" x 8" x 8" Coat Expansion Pockets with Handwarmer
- Liner Inspection Velcro® Opening

### Style BA3207K98 shown right in Standard B1 Material Configuration



### Style BA32 shown left in optional Khaki Advance Outer Shell material



EasyGrip™ DRD for quick response in emergency situations

32" length coat is a standard in the fire industry



### Want LazerMax on Your B1™ Gear? No Problem! Order Option CO-RP

Customize your set of B1™ gear with LazerMax™ Reflective Piping! It will give your gear the distinctive look only LazerMax™ can deliver, with the benefit of additional safety in low light situations.

**Compliant to the current 2018 Edition of NFPA 1971 Standard on Protective Ensembles for Structural Firefighting**





# B1™ PANTS

## Feature List

- Low-Rise Waist Design with small 3" Rear Bib for Overlap Protection
- Side Take-Up Straps with low-profile High Temp (HT) Delrin Sliders for easy adjustment
- Pant Closure: Hook & Dee, Snap with Velcro® Fly Closure
- 2" x 10" x 10" Pant Expansion Pocket lined with Kevlar® Twill
- Black Stedshield Double Padded Knees with Side Kick Extension Panel
- Black Stedshield Pant Cuff Reinforcements – Double Stitched
- Lime/Yellow 3M™ Scotchlite™ Reflective Material for enhanced visibility – Double Stitched
- Reverse Boot Cut
- Black-Ops Multi Adjust Suspenders – No Metal Suspender Buttons!



Style BA3307K98 shown right in Standard B1 Material Configuration



## B1™ Proximity Gear

Coat Style: BAC17  
Pant Style: BAP17



Low-rise 3" Bib

Quick take-up straps for easy adjustments

Double-stitched Stedshield® cuffs

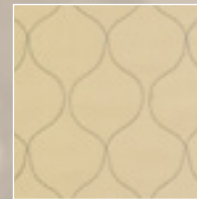
Style BA33 shown in optional Khaki Advance Outer Shell material

## B1™ Standard Materials

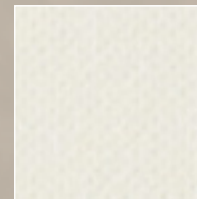
Coat: BA3207K98  
Pant: BA3307K98



6.6 oz. Khaki Pioneer Outer Shell



Defender® M Brass NP Thermal Liner



Stedair 3000® Moisture Barrier